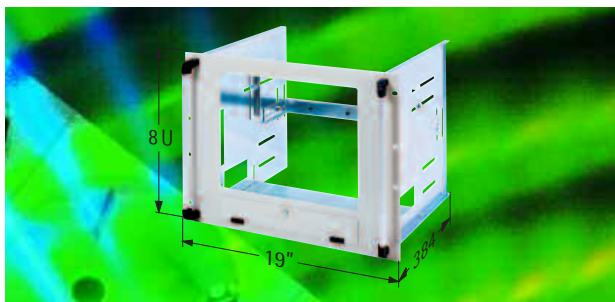




19"-monitor plug - in unit 8U



- for quick and easy integration of 14" and 15" monitors
- non-slip mounting of the monitor
- front 5 mm thick protective glass
- 19" dimensions acc. to IEC 297-1
- max. monitor dimensions: WxHxD = 398 mm x 319 mm x 429 mm
- accommodation via slide rails (see page 11.13) recommended

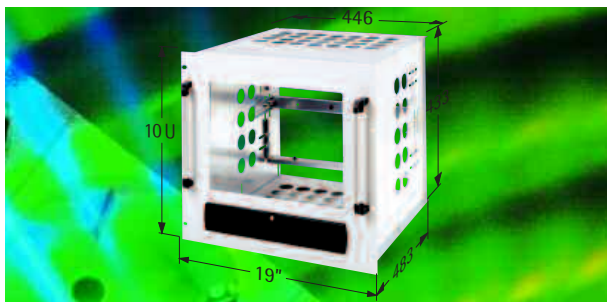
Finish:
front:
RAL 7035 light grey

Material:
front panel: 3mm aluminium
chassis: sheet metal, zinc coated

Delivery:
kit form with mounting hardware

Order number
20-2205-12

19"-monitor plug - in unit 10U



- designed to accommodate 17" monitors
- front 4 mm thick protective glass
- 19" dimensions acc. to IEC 297-1
- max. monitor dimensions: WxHxD = 420 mm x 418 mm x 480 mm
- accommodation via slide rails (see page 11.13) recommended

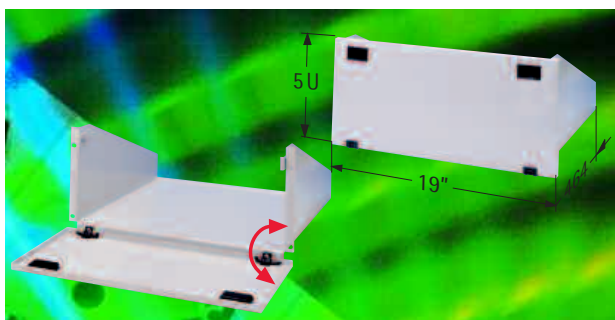
Finish:
front:
RAL 7035 light grey

Material:
front panel: 3 mm aluminium
chassis: sheet metal, zinc coated
control panel: plastic

Delivery:
kit form with mounting hardware

Order number
20-2204-00

19"-shelf with hinged front panel



In contrast to other traditional shelves, this 5U shelf has a hinged front panel, which not only protects the components on it but also serves as a facing cover near the front panel. "Holes" at cabinet's front belong to the past.

- 5U shelf
- with practical latches
- ventilated bottom panel

- flap opening up to 90°
- with strain-relief for cabling
- load capacity: ca. 30 kg

Finish:
RAL 7035 light grey

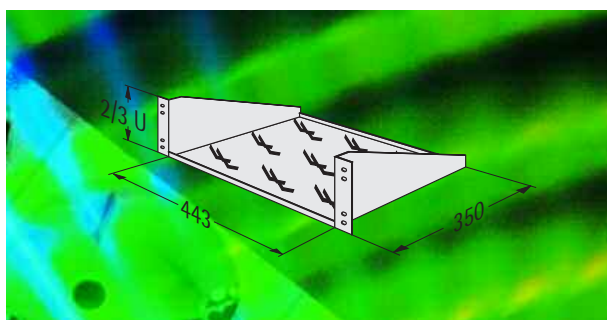
Material: sheet metal

Storage space:
444 mm x 450 mm

Delivery:
complete with mounting hardware

Dimensions (W x H x D) mm	Size U	Order number
482,6 x 221,5 x 464	5	20-2830-00

19"-shelf 2/3 U



- simple assembly into 19"-system (only one 19" level required)
 - ventilated
 - including mounting hardware
 - load capacity: ca. 15 kg
- Finish:**
RAL 7035 light grey
RAL 9005 dark black

Material: sheet metal

Dimensions (H x W x D):
88/132 mm x 482,6 x 350 mm

Storage space (w x d):
443 mm x 350 mm

Delivery:
complete with mounting hardware

Size U	Finish RAL 7035	Finish RAL 9005
2	31-5810-20	31-5810-25
3	31-5810-00	31-5810-35

19"-shelf "extractable"

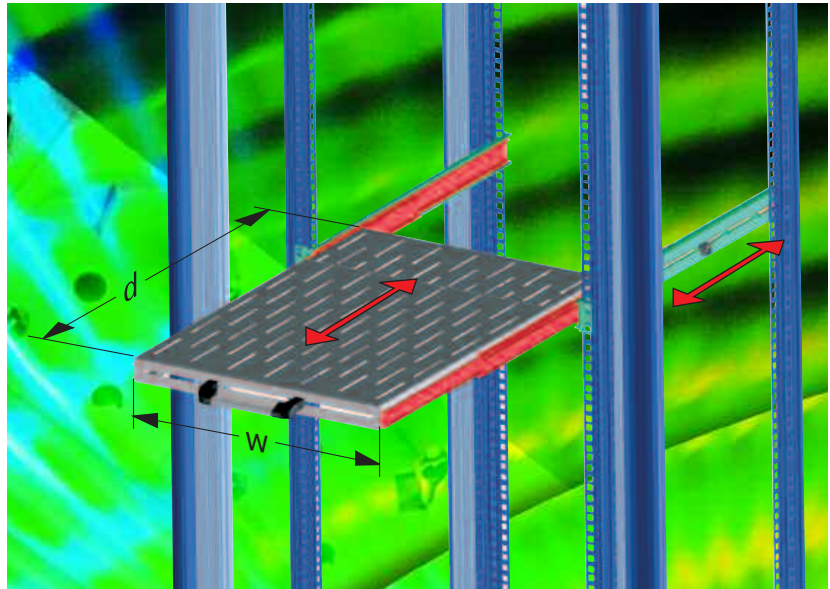
- assembly in 19" cabinets with two 19" levels (variable cabinet depth 650/800/1000 mm)
 - storage space: w = 400 mm
d = 460-750 mm
 - load capacity: 50 kg
- Finish:**
shelf: RAL 7035
assembly rails: galvanized

Material: sheet metal

Dimensions (H x W x D):
1 U (44 mm) x 19" (483 mm) x 480 mm

Order information

Order number
31-6037-00



19" shelf 1 U - VARiplain "variable depth"

- designed as 19" component for integration in LAN or server cabinets
- telescopic from 455 - 780mm (see diagram)
- simple one-man assembly via open slotted hole in the 19" front (hook in)
- load capacity: up to 80 kg (area load)

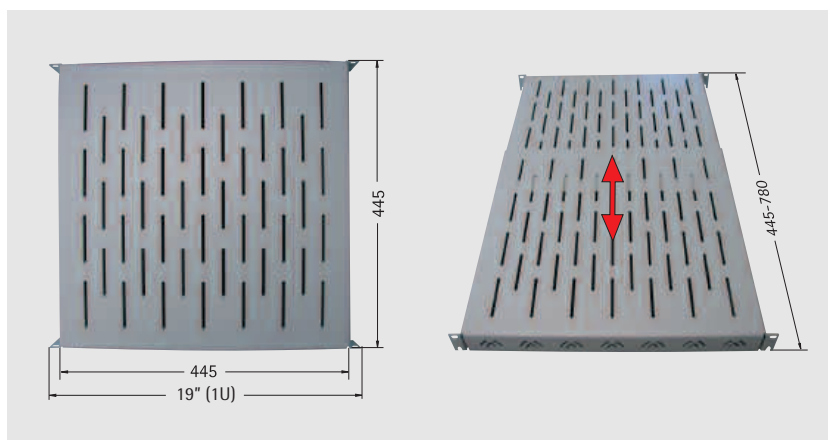
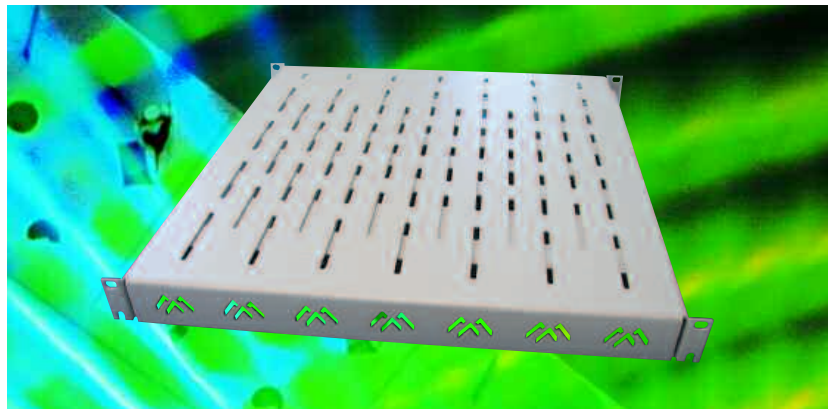
Finish:
RAL 7035 light grey
RAL 9005 dark black

Material:
sheet metal

Dimensions (H x W x D):
1 U (44)x 19" (483 mm) x 445 mm

Storage space (w x d):
440 mm x 445 mm - 780 mm

Delivery:
complete with mounting hardware



Order information

U	Finish RAL 7035	Finish RAL 9005
1	31-6036-99	31-6036-69